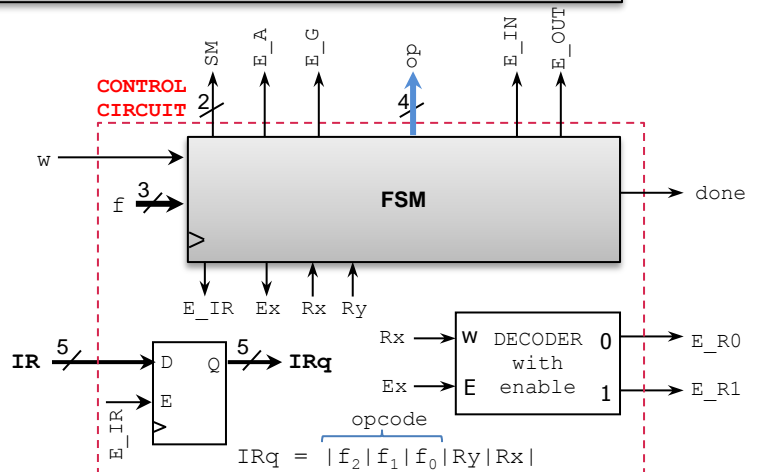
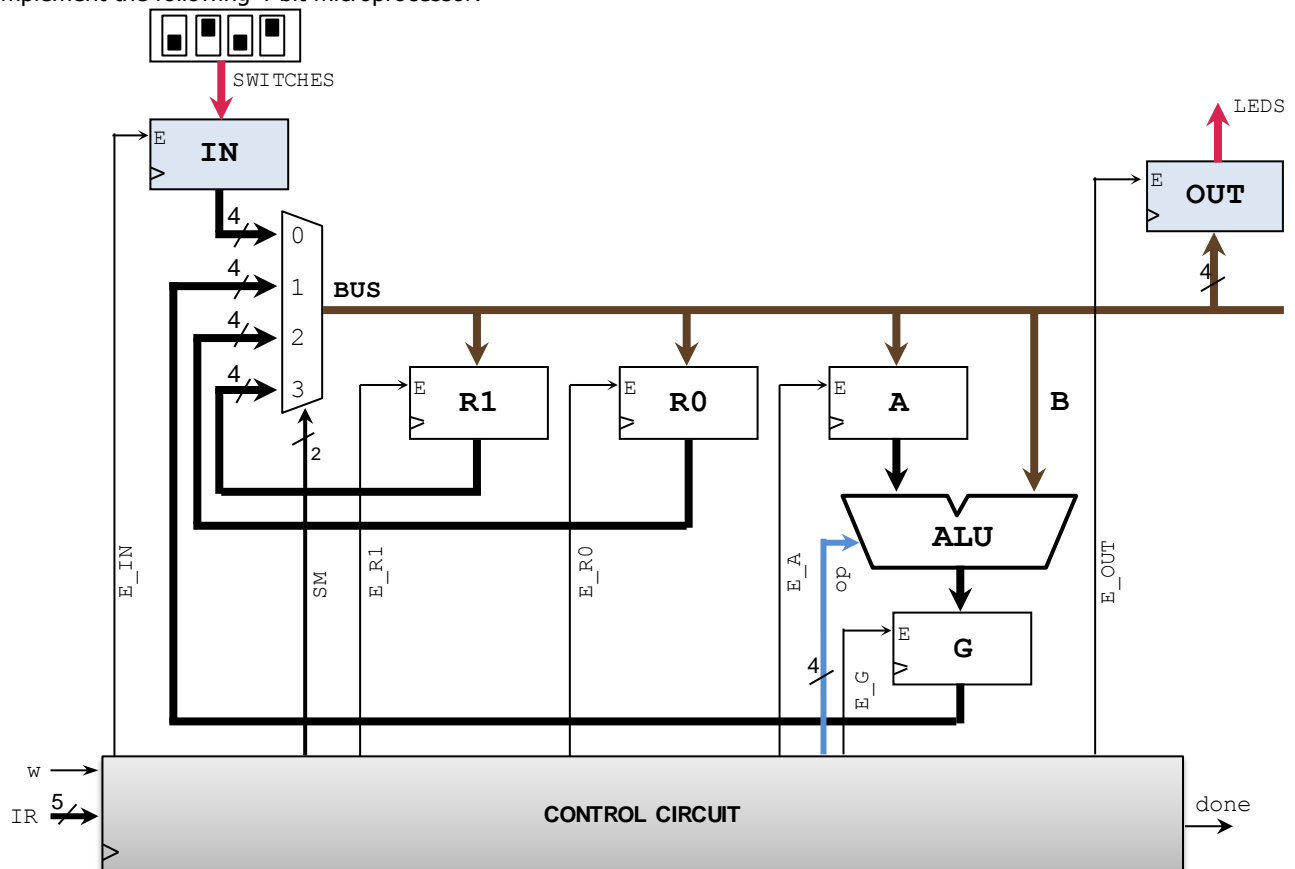


(Due date: **005**: February 1st, **006**: February 2nd)

- ✓ Implement a Digital System: Control Unit and Datapath Unit.
- ✓ Describe Algorithmic State Machine (ASM) charts in VHDL.
- ✓ Learn the basics of Microprocessor Design.

- ✓ Refer to the [Tutorial: VHDL for FPGAs](#) for parametric code for: Register and ALU.

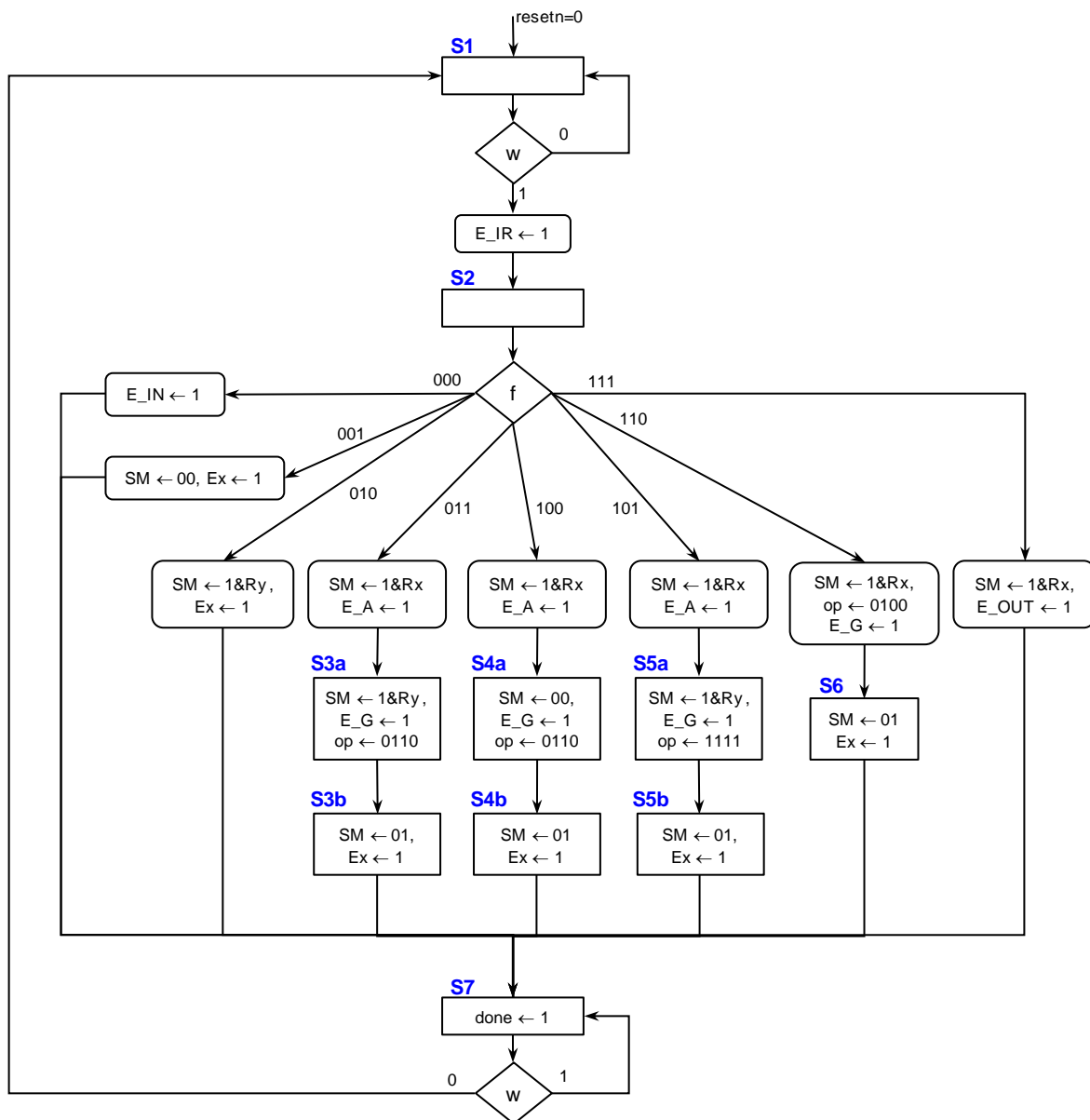


- Instruction Set:
 - ✓ Instruction: $|f_2|f_1|f_0|Ry|R_x|$

F	Operation	Function
000	load IN	$IN \leftarrow \text{Switches}$
001	load R_x , IN	$R_x \leftarrow IN$
010	copy R_x , R_y	$R_x \leftarrow R_y$
011	add R_x , R_y	$R_x \leftarrow R_x + R_y$
100	add R_x , IN	$R_x \leftarrow R_x + IN$
101	xnor R_x , R_y	$R_x \leftarrow R_x \text{ XNOR } R_y$
110	inc R_x	$R_x \leftarrow R_x + 1$
111	load OUT, R_x	$OUT \leftarrow R_x$

- ✓ Instruction examples:
 - load R_1 , IN \equiv IR = 001X1
 - add R_0 , R_1 \equiv IR = 01110

- Control Circuit: FSM



▪ Arithmetic Logic Unit (ALU):

sel	Operation	Function	Unit
0000	$y \leq A$	Transfer 'A'	Arithmetic
0001	$y \leq A + 1$	Increment 'A'	
0010	$y \leq A - 1$	Decrement 'A'	
0011	$y \leq B$	Transfer 'B'	
0100	$y \leq B + 1$	Increment 'B'	
0101	$y \leq B - 1$	Decrement 'B'	
0110	$y \leq A + B$	Add 'A' and 'B'	
0111	$y \leq A - B$	Subtract 'B' from 'A'	
1000	$y \leq \text{not } A$	Complement 'A'	Logic
1001	$y \leq \text{not } B$	Complement 'B'	
1010	$y \leq A \text{ AND } B$	AND	
1011	$y \leq A \text{ OR } B$	OR	
1100	$y \leq A \text{ NAND } B$	NAND	
1101	$y \leq A \text{ NOR } B$	NOR	
1110	$y \leq A \text{ XOR } B$	XOR	
1111	$y \leq A \text{ XNOR } B$	XNOR	

PROCEDURE

▪ **Vivado: Complete the following steps:**

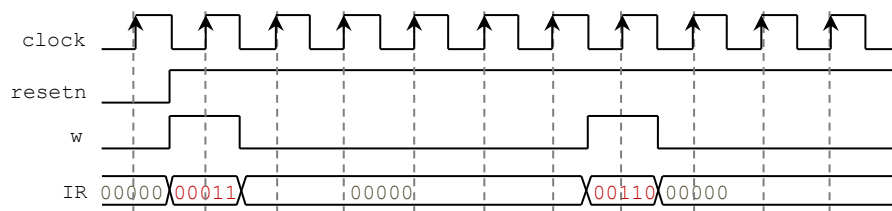
- ✓ Create a new Vivado project. Select the corresponding Artix-7 FPGA device (e.g.: the XC7A50T-1CSG324 FPGA device for the Nexys A7-50T board).
- ✓ Write the VHDL code for the given circuit. Synthesize your circuit to clear syntax errors.
 - Suggestion: Use the **Structural Description**: Create a separate .vhd file for the components (register, ALU, MUX, Control Circuit) and interconnect them all in a top file. The Control Circuit and ALU have their own components.
- ✓ Write the VHDL testbench to simulate your circuit.

- Your testbench must test the following Assembly program (use a 100 MHz input clock with 50% duty cycle):

```

load IN;           IN ← 0110 (SWs = 0110)
load R0, IN;       R0 ← 0110
copy R1, R0;       R1 ← 0110, R0 ← 0110
inc R0;            R0 ← 0111
add R1, R0;        R1 ← 0111 + 0110 = 1101
xnor R1, R0;       R1 ← 1101 xnor 0111 = 0101
load OUT, R1;      OUT ← 0101
  
```

- This timing diagram depicts an example where two instructions are loaded.



- ✓ Perform Behavioral Simulation and Timing Simulation of your design. **Demonstrate this to your TA.**
 - Behavioral Simulation: To help debug your circuit, add internal signals (e.g.: state, R0, R1, A) to the waveform view.

✓ I/O Assignment: Create the XDC file associated with your board.

- Suggestion (Nexys A7-50T/A7-100T, Nexys 4/DDR):

Board pin names	CLK100MHZ	CPU_RESET	SW8-SW5	SW4-SW0	BTNC	LED4	LED3-LED0
Signal names in code	clock	resetn	IN	IR	w	done	OUT

- Note: synchronous circuits always require a clock and reset signal.

- **Reset signal:** As a convention in this class, we use active-low reset (*resetn*). Thus, we tie *resetn* to the active-low push button CPU_RESET of the Nexys A7-50T/A7-100T, Nexys 4/DDR board.
- **Clock signal:** Like other signals in the XDC file, uncomment the lines associated with the clock signal and replace the signal label with the name used in your code. In addition, there is parameter `-period` that is set by default to 10.00. This is the period (in ns) that your circuit should support.

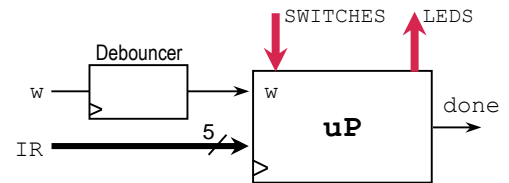
* Nexys A7-50T: In these lines, replace the label `CLK100MHZ` with the signal name you use in your code (`clock`):

```

set_property -dict { PACKAGE_PIN E3    IOSTANDARD LVCMOS33 } [get_ports { CLK100MHZ }];
create_clock -add -name sys_clk_pin -period 10.00 -waveform {0 5} [get_ports { CLK100MHZ }];
  
```

SECOND ACTIVITY: TESTING (30/100)

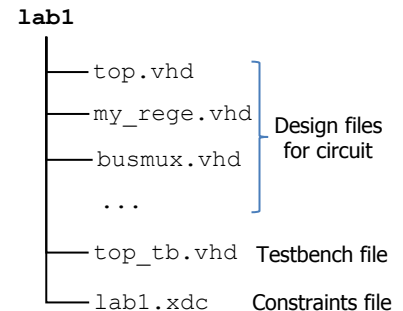
- In order to properly test the microprocessor, we need to avoid mechanical bouncing on the pushbutton for input w . Connect the debouncer circuit (use the given files: `mydebouncer.vhd`, `my_genpulse_sclr.vhd`) on the input w .
- Note that you do not need to simulate the circuit that includes the debouncer.



- ✓ Generate and download the bitstream on the FPGA and test the Assembly Program. **Demonstrate this to your TA.**
 - To test the Assembly program, load each instruction via the input IR and use the input w to feed the instruction.

SUBMISSION

- Submit to Moodle (an assignment will be created):
 - ✓ This lab sheet ([as a .pdf](#)) completed and signed off by the TA (or instructor).
 - ✓ ([As a .zip file](#)) All the generated files: VHDL code, VHDL testbench (for the uP block), and XDC file. DO NOT submit the whole Vivado Project.
 - Your .zip file should only include one folder. Do not include subdirectories.
 - It is strongly recommended that all your design files, testbench, and constraints file be located in a single directory. This will allow for a smooth experience with Vivado.
 - You should only submit your source files AFTER you have demoed your work. Submission of work files without demoing will be assigned **NO CREDIT**.



TA signature: _____

Date: _____